



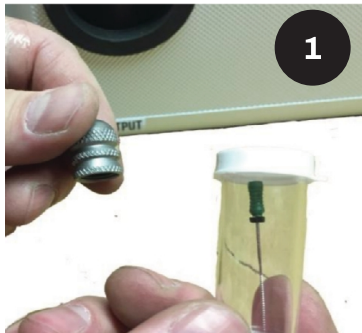
# Troubleshooting Guide

**Most Common Issues with Crapshooter Jetters:  
Clogged Nozzles, Dirty Water Source**

**!NEVER CONNECT YOUR JETTER TO A HOT WATER HEATER!**

## CLOGGED NOZZLES

To generate the high PSI in our jettors, the nozzles have very small holes which are very susceptible to clogging.

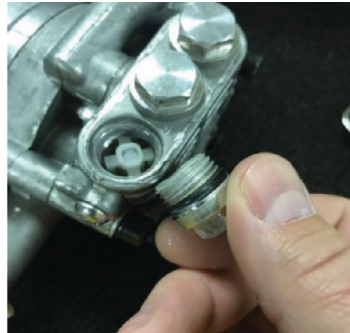


- Use the cleaner tool located in the nozzle kits as shown. (Photos 1 & 2)
- Twist the nozzle cleaner into the various ports of the nozzle. Generally it is easier to go from the outside in because you can see the jet holes. (Photos 3 & 4)
- Please note to wash the nozzle out with water after you clean the jet holes.

# UNCLOGGING PUMP FILTERS



Loosen the pump filters. Some models require a 14mm, others require a 10mm.



You can take the valve and top out of the pump, and then run water through the pump to clear any debris that may be inside.



Generally you can see the water and if it is cloudy you know there is foreign material in the pump.

# LEAKY HIGH PRESSURE FITTING

Most commonly the fitting hasn't been tightened completely, but occasionally, the o-ring on the inside step of the fitting needs to be changed.



- To change the o-ring, use the o-ring from your nozzle kit.
- You may need to use a pick of small flathead screwdriver to remove the old o-ring.
- Take caution to not scar the brass when removing the old o-ring.

# GFCI NEEDS TO BE RESET

"Several times, I couldn't get the pump to run, and then I realized the GFCI wasn't reset."

